



Gippsland
Family Violence
Alliance

2023

Gippsland Family Violence Alliance Orientation Pack

www.gippslandfamilyviolencealliance.com.au



Contents

1

About the Glppsland Family Violence Alliance

2

Structure

3

Decision Making Tree

4

Roles and Responsibilities

5

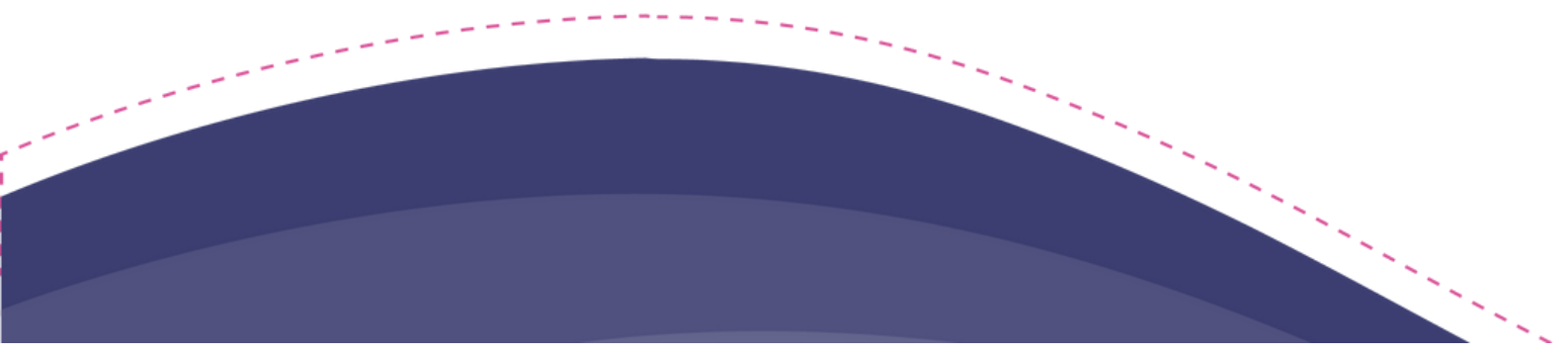
Checklist for Practitioners

6

Checklist for Middle Managers

7

Checklist for Prevention



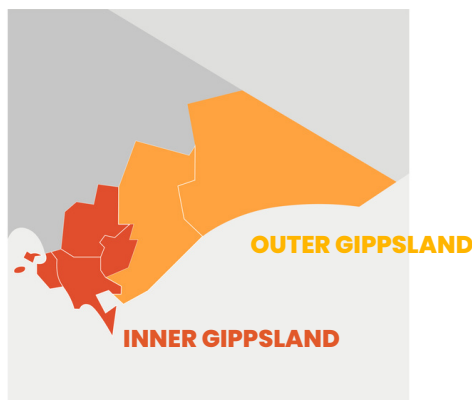
About Us

Gippsland Family Violence Alliance is the Gippsland's Regional integration Committee which is the local governance structure that has been underpinning the delivery of family violence reform for well over a decade in Gippsland.

Established in 2006, Family Violence Regional Integration Committees (FVRICs) were established to improve the integration of services, playing a vital role in the transformation of Victorian service delivery and community responses to family violence. Since their inception FVRICs have played a system leadership role focused on increasing the safety of victim survivors and accountability of perpetrators.

The recommendations of the 2016 Royal Commission into Family Violence (RCFV) have driven far-reaching reform within the Victorian family violence service system. Regional integration plays a critical role in implementing the reform agenda, and in recognition of this Family Safety Victoria has released new guidelines for Family Violence Integration Committees, which outline five new Strategic Priority Areas.

In 2023, 13 FVRICs operate across the 17 Department of Families, Fairness and Housing (DFFH) Areas. Funding is provided by FSV to support their operation including the co-ordination role of the Principal Strategic Advisor (PSA) positions and area-based projects. Gippsland has one PSA for the Gippsland area. The Gippsland Family Violence Alliance has 36 member agencies, including specialist family violence, homelessness, mental health, AoD, health and government agencies, who work across Inner and Outer Gippsland. We cover the largest geographic area in the state to coordinate the service system to respond and support those who experience family violence and to assist those using violence to address their behaviour.



Vision Statement

Our vision is for a future where all people in Gippsland are safe, thriving, and living free from family violence.

Purpose Statement

The purpose of the Gippsland Family Violence Alliance is to critically evaluate and disrupt systems and structures to ensure they become inclusive, accountable, equitable and accessible for our Gippsland Communities.

We do this through:

- Building workforce capability
- Collaborative practice
- Evidence and advocacy
- Taking a collective impact approach
- Innovation



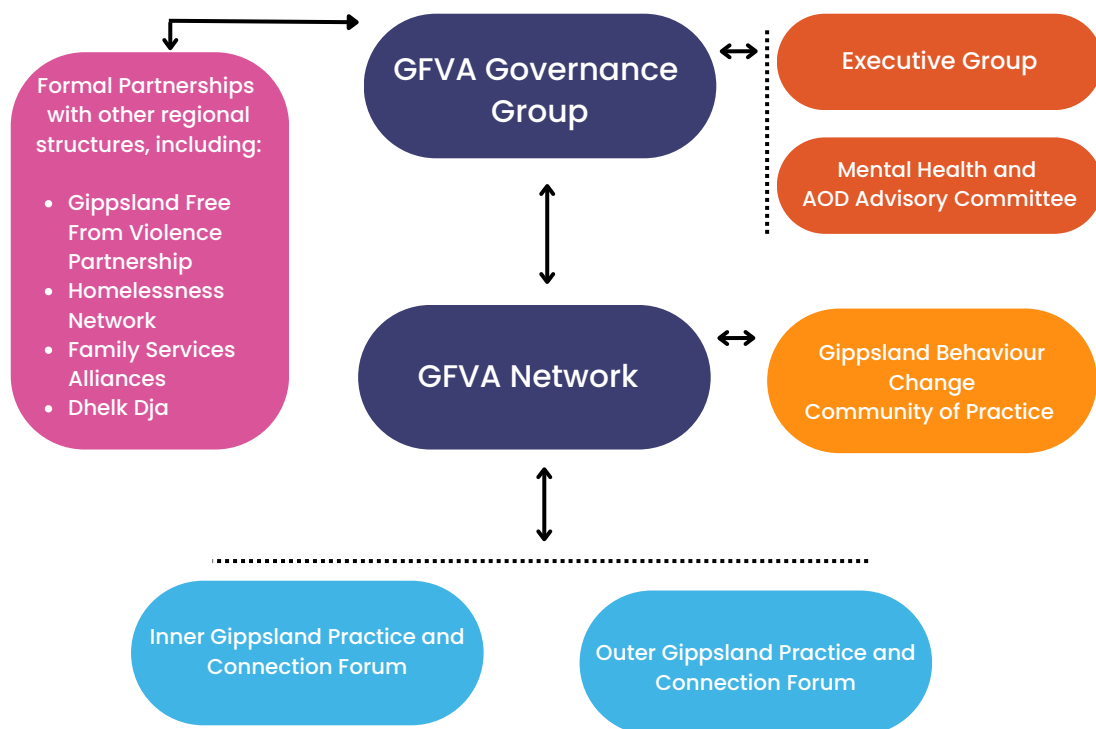
Five Strategic Pillars

The Gippsland Family Violence Alliance (GFVA) along with the other 13 Regional Integration Committee's base their work around five strategic pillars which are in the guidelines. Those pillars are:

-  Leading initiatives that support service integration and system improvements
-  Supporting the implementation, monitoring and evaluation of family violence reform initiatives
-  Developing an evidence base to inform planning, prioritisation of system improvement initiatives and advocacy for system change
-  Building workforce capacity and capability
-  Effective cross-sector governance for system leadership



Structure



GFVA Governance Group

The Governance Group consists of core members from Specialist Family Violence and Family Services agencies, along with associate members from government agencies. The role of the Governance Group is to oversee the development and implementation of the Strategic Plan and to lead advocacy for the Gippsland Region.

GFVA Network

The GFVA Network, consists of members from key community services agencies. The role of the Network is to operationalize the GFVA Strategic Plan and provide system's knowledge.

Mental Health and Alcohol and Drug Advisory Committee

The Mental Health and Alcohol and Drug Advisory Committee is facilitated by the Specialist Advisors to Mental Health and AoD. Membership consists of agencies from the AoD and mental health sector. They advise and build practice between the AoD, Mental Health and Family Violence Sector.

Gippsland Behaviour Change Community of Practice

The Gippsland Behaviour Change Community of Practice consists of members from agencies that support Men and Adolescents who are using violence. The purpose is to build practice, networking and wellbeing opportunities for practitioners.

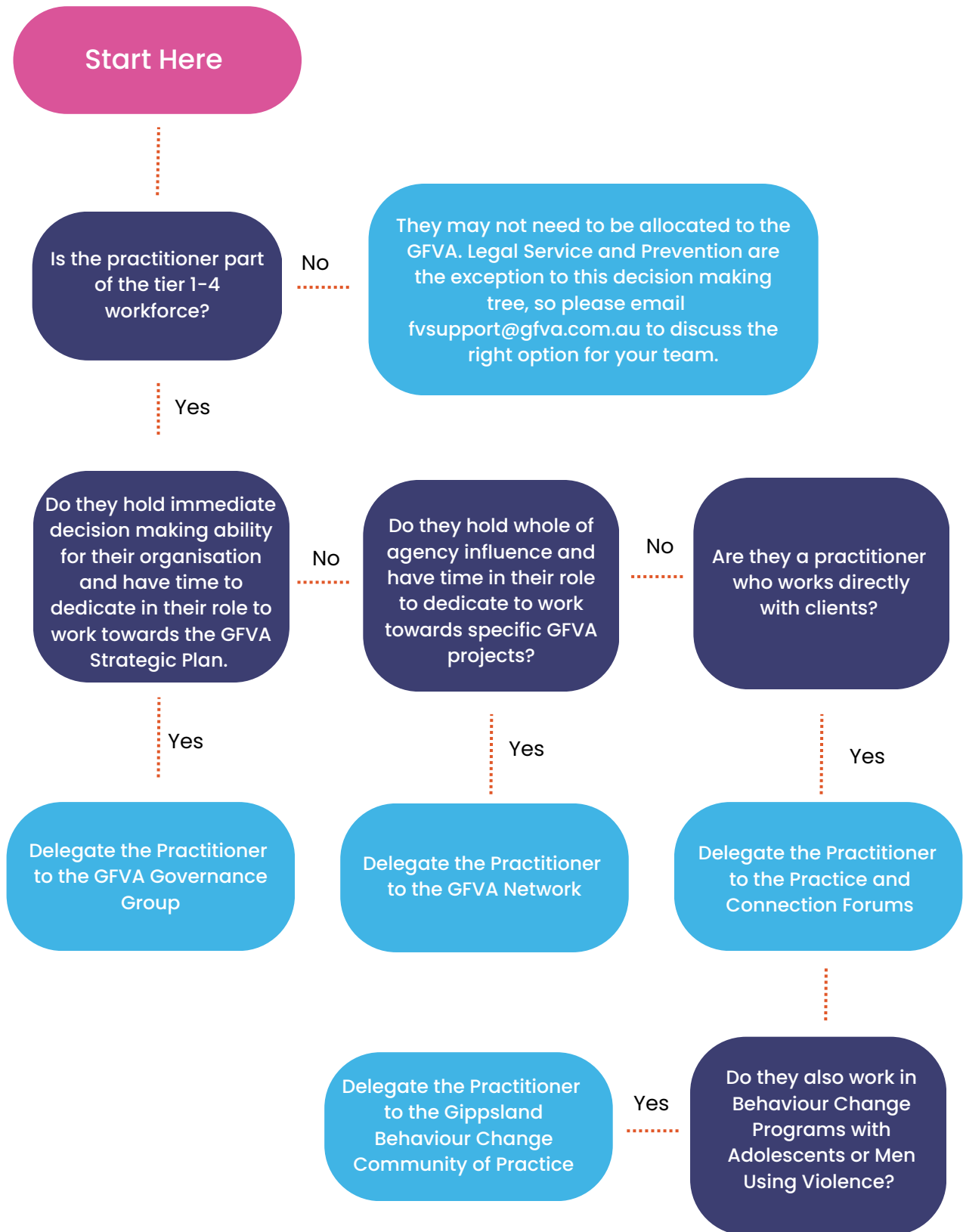
Practice and Connection Forums

The Mental Health and Alcohol and Drug Advisory Committee is facilitated by the Specialist Advisors to Mental Health and AoD. Membership consists of agencies from the AoD and mental health sector. They advise and build practice between the AoD, Mental Health and Family Violence Sector. Supporting practitioners to respond to family violence across Gippsland.



Decision Making Tree

This decision making tree should be used to determine where someone should be allocated to within the GFVA structure.



Roles and Responsibilities Practitioners

- Read the monthly GFVA Updates Newsletter, which includes family violence data and information about the website.
- Share information about service delivery/program with other practitioners/services and with the PSA and their team.
- Create/contribute to an environment where collaboration is valued.
- Use your sphere of influence to further the strategic priorities and advocacy priorities of the GFVA, (this includes within other partnerships, home agencies, government working groups etc).
- Create/contribute to an environment which supports the wellbeing of practitioners and clients.
- Participate in MARAM Collaborative Practice Training
- Participate in relevant Practice and Connection Forums
- Participate in working groups at the request of their manager.



Roles and Responsibilities Middle Managers

- Read the monthly GFVA Updates Newsletter, which includes family violence data and information about the website.
- Share information about service delivery/program with other practitioners/services and with the PSA and their team.
- Create/contribute to an environment where collaboration is valued.
- Use your sphere of influence to further the strategic priorities and advocacy priorities of the GFVA, (this includes within other partnerships, home agencies, government working groups etc).
- Create/contribute to an environment which supports the wellbeing of practitioners and clients.
- Participate in MARAM Collaborative Practice Training
- Participate in relevant Practice and Connection Forums
- Participate in working groups
- Ensure Practitioners are inducted into the GFVA



Roles and Responsibilities Leaders

- Read the monthly GFVA Updates Newsletter, which includes family violence data and information about the website.
- Share information about service delivery/program with other practitioners/services and with the PSA and their team.
- Create/contribute to an environment where collaboration is valued.
- Use your sphere of influence to further the strategic priorities and advocacy priorities of the GFVA, (this includes within other partnerships, home agencies, government working groups etc).
- Create/contribute to an environment which supports the wellbeing of practitioners and clients.
- Provide service system data to inform advocacy, client journey's/outcomes and to identify gaps and barriers
- Provide clear guidance to middle managers and practitioners about how practice frameworks are to be used in a multi-agency context
- Ensure practitioners and middle managers are inducted into the GFVA, included being signed up to relevant newsletters, training and workforce capability opportunities and the website
- Educate and mentor practitioners and middle managers to understand system integration and the Gippsland Family Violence Alliance role in facilitating it
- Advocate for systems/clients needs



Roles and Responsibilities Prevention

- Read the monthly GFVA Updates Newsletter, which includes family violence data and information about the website.
- Share information about service delivery/program with other practitioners/services and with the PSA and their team.
- Create/contribute to an environment where collaboration is valued.
- Use your sphere of influence to further the strategic priorities and advocacy priorities of the GFVA, (this includes within other partnerships, home agencies, government working groups etc).
- Create/contribute to an environment which supports the wellbeing of practitioners and clients.
- Contribute to a collaborative environment with the response sector by sharing information and resources and other capacity building opportunities.
- Engage in joint networks and projects with the response sector.
- Contribute to the creation of joint vision and outcomes for the community and clients.



Orientation Checklist Practitioners

Task	Completed	Date
Practitioner sign up to Updates! eNews		
Register practitioner to attend MARAM Collaborative practice		
Provide practitioner with the Roles and Responsibilities as a practitioner		
Provide practitioner with links to website		



Orientation Checklist Middle Managers

Task	Completed	Date
Middle Manager sign up to Updates! eNews		
Register middle manager to attend MARAM Collaborative practice		
Provide middle manager with the Roles and Responsibilities as a middle manager		
Provide middle manager with links to website		
Delegate middle manager to Network as necessary		



Orientation Checklist Leaders

Task	Completed	Date
Leader sign up to Updates! eNews		
Email fvsupport@gfva.com.au to have the Leader signed up to the Governance ENews.		
Provide middle manager with the Roles and Responsibilities as a Leader		
Provide Leader with links to website		
Delegate Leader to GFVA Governance Group as necessary		
Set up meeting with PSA for induction into GFVA		



